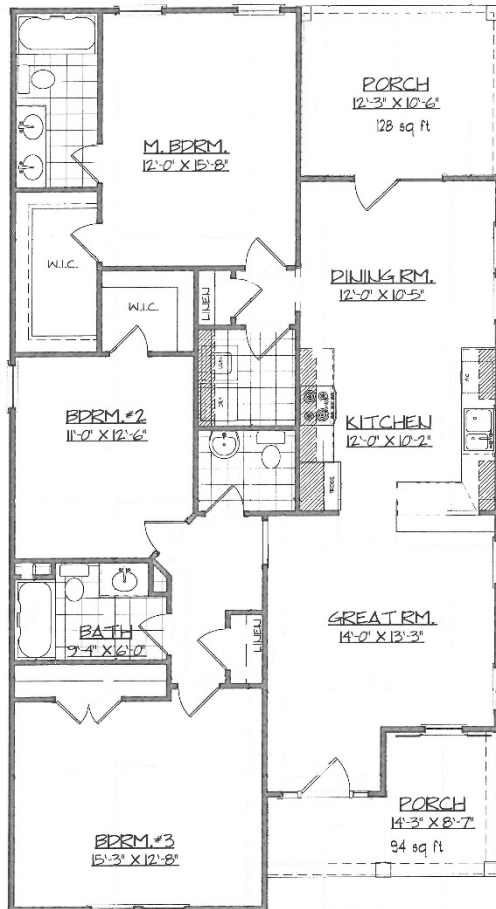


FOR INFORMATION CONTACT:

**Charlene Watkins at
East Augusta
Community
Development at
706-722-7969
eastaugcdc@aol.com**



1219 Perry Avenue



**1,674 Square Feet
3 Bedrooms / 2 ½ Baths
9 Foot Ceilings
Front Porch
Wood Floor in Common
Areas
Ceramic Tile in Bathrooms
Stainless Steel Appliances**

DEVELOPED BY:

**The Community Development
Collabrative LLC**



*Subject to change by Developer



Housing & Community Development