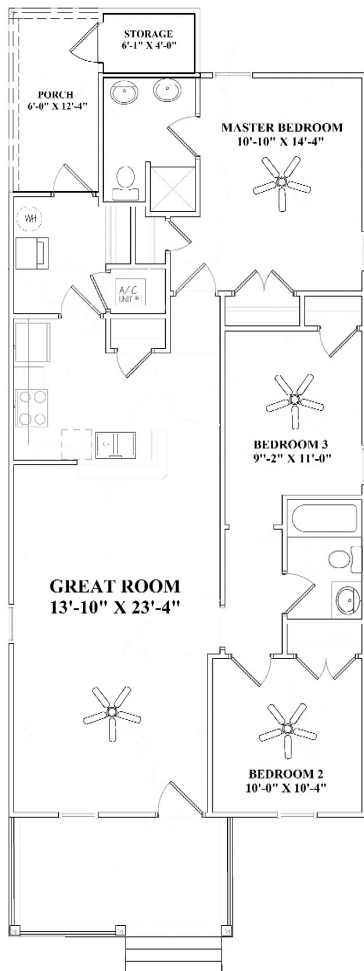


FOR INFORMATION CONTACT:

**Edith Peebles with Laney  
Walker Development  
Corporation at  
706-823-9780  
Peebles.edith@gmail.com**



## **1318 Eleventh Street**



**1,443 Square Feet  
3 Bedrooms / 2 Baths  
9 Foot Ceilings  
Front Porch  
Wood Floor in Common  
Areas  
Ceramic Tile in Bathrooms  
Stainless Steel Appliances**

DEVELOPED BY:

**LANEY-WALKER**  
DEVELOPMENT CORPORATION  
*"Bringing The Community Back To Life"*



\*Subject to change by Developer



**Housing & Community Development**