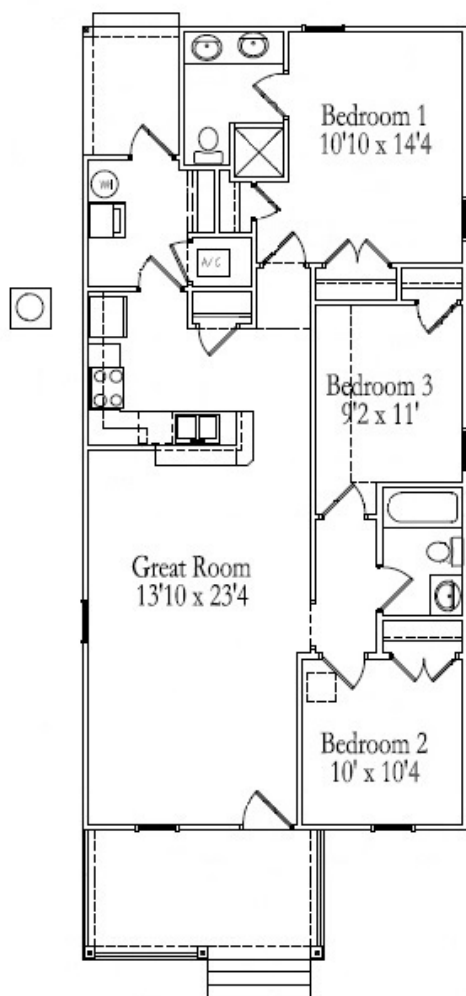


FOR INFORMATION CONTACT:

**Edith Peebles with Laney
Walker Development
Corporation at
706-823-9780
Peebles.edith@gmail.com**



1214 Perry Avenue



**1,320 Square Feet
3 Bedrooms / 2 Baths
9 Foot Ceilings
Front Porch
Wood Floor in Common
Areas
Ceramic Tile in Bathrooms
Stainless Steel Appliances**

DEVELOPED BY:

LANEY-WALKER
DEVELOPMENT CORPORATION
"Bringing The Community Back To Life"



*Subject to change by Developer



Housing & Community Development