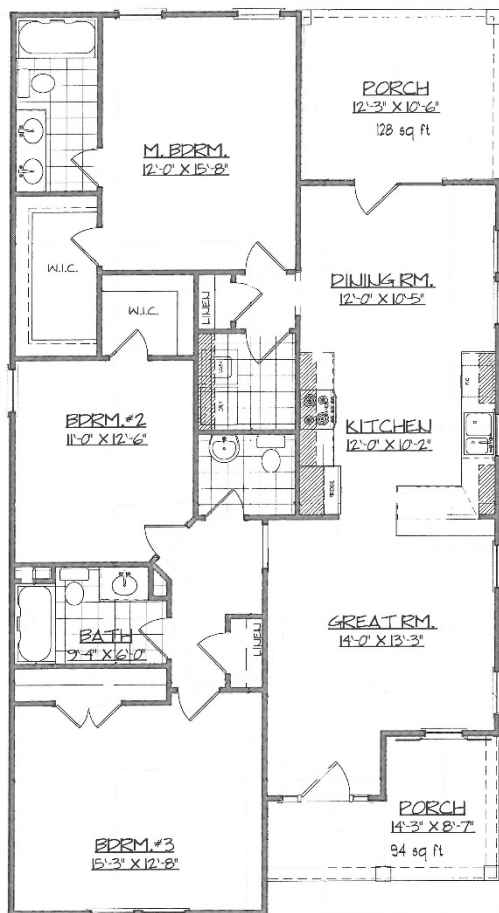


FOR INFORMATION CONTACT:

**Charlene Watkins at  
East Augusta  
Community  
Development at  
706-722-7969  
eastaugcdc@aol.com**



## **1225 Perry Avenue**



**1,674 Square Feet  
3 Bedrooms / 2 ½ Baths  
9 Foot Ceilings  
Front Porch  
Wood Floor in Common  
Areas  
Ceramic Tile in Bathrooms  
Stainless Steel Appliances**

DEVELOPED BY:

**The Community Development  
Collabrative LLC**



\*Subject to change by Developer



**Housing & Community Development**